

## LAMPIRAN

Lampiran 1. Data Input SmartPLS 3.0

<b>Kode Saham</b>	<b>Tahun</b>	<b>KM</b>	<b>KI</b>	<b>KAP</b>	<b>Fee</b>	<b>ROA</b>	<b>ROE</b>	<b>Q</b>
ADRO	2013	15.15	49.58	1	26.46	3.4	7.2	0.76
AKRA	2013	0.51	59.18	1	23.25	4.2	11.5	1.27
ASII	2013	0.04	50.11	1	28.04	10.4	21.0	1.44
BBCA	2013	0.26	48.91	1	26.10	2.9	22.3	1.35
GGRM	2013	0.92	75.55	1	24.95	8.6	14.9	1.93
INDF	2013	0.02	50.07	1	26.00	4.4	8.9	0.94
MNCN	2013	0.20	67.11	1	20.37	18.8	23.4	3.47
PWON	2013	0.03	52.19	1	23.38	12.2	27.7	1.67
SMRA	2013	0.28	37.64	1	22.88	8.0	23.5	1.23
UNTR	2013	0.06	59.50	1	24.72	8.4	13.5	1.24
WSKT	2013	0.77	6.40	0	20.29	4.2	15.4	0.32
ADRO	2014	15.13	49.65	1	26.57	2.9	5.6	0.72
AKRA	2014	0.73	58.78	1	23.07	5.5	15.0	1.30
ASII	2014	0.04	50.11	1	27.97	9.4	18.4	1.42
BBCA	2014	0.25	48.92	1	26.55	3.9	21.2	1.44
GGRM	2014	0.92	75.55	1	24.94	9.3	16.2	2.37
INDF	2014	0.02	50.07	1	25.60	5.9	12.5	0.77
MNCN	2014	0.09	66.9	1	24.82	13.8	20.1	2.52
PWON	2014	0.03	57.61	1	23.33	15.5	31.4	1.72
SMRA	2014	0.28	37.64	1	23.14	10.2	25.2	1.82
UNTR	2014	0.06	59.50	1	25.23	8.0	12.5	1.01
WSKT	2014	0.12	12.59	0	20.25	4.0	17.6	1.13
ADRO	2015	13.19	51.49	1	26.47	2.5	4.5	0.44
AKRA	2015	0.68	59.17	1	23.36	6.8	17.0	1.97
ASII	2015	0.04	50.11	1	28.04	6.4	12.3	1.12
BBCA	2015	0.25	48.91	1	26.72	3.8	20.1	1.40
GGRM	2015	0.92	75.55	1	25.04	10.2	17.0	1.98
INDF	2015	0.02	50.07	1	25.17	4.0	8.6	0.57
MNCN	2015	0.07	64.64	1	24.96	8.8	13.4	1.74
PWON	2015	0.03	52.19	1	23.37	7.5	14.8	1.60
SMRA	2015	0.28	37.64	1	23.52	5.7	14.1	1.74
UNTR	2015	0.0004	59.50	1	24.81	4.5	7.1	0.89
WSKT	2015	0.464	13.63	0	20.37	3.5	10.8	0.86
ADRO	2016	13.32	43.91	1	26.86	5.2	9.0	0.80
AKRA	2016	0.71	58.58	1	23.66	6.4	14.8	1.59
ASII	2016	0.04	50.11	1	28.21	7.0	13.1	1.39

## Lampiran 1. (Lanjutan)

<b>Kode Saham</b>	<b>Tahun</b>	<b>KM</b>	<b>KI</b>	<b>KAP</b>	<b>Fee</b>	<b>ROA</b>	<b>ROE</b>	<b>Q</b>
BBCA	2016	0.2	48.91	1	26.95	4.0	18.3	1.39
GGRM	2016	0.67	75.55	1	25.25	10.6	16.9	2.25
INDF	2016	0.02	50.07	1	25.18	6.4	12.0	0.98
MNCN	2016	0.08	62.66	1	24.87	10.4	15.6	1.76
PWON	2016	0.02	56.13	1	23.46	8.6	16.2	1.32
SMRA	2016	0.14	37.64	1	23.99	2.9	7.4	1.38
UNTR	2016	0.0006	59.50	1	24.84	7.9	11.9	1.02
WSKT	2016	0.33	13.91	0	21.01	2.9	10.8	0.69
ADRO	2017	12.25	43.91	1	27.18	7.9	13.1	0.77
AKRA	2017	0.57	58.47	1	24.24	7.8	14.4	1.52
ASII	2017	0.04	50.11	1	28.66	7.84	14.8	1.26
BBCA	2017	0.19	56.70	1	27.02	3.9	19.2	1.54
GGRM	2017	0.67	75.55	1	25.23	11.6	18.4	2.70
INDF	2017	0.02	50.07	1	25.19	5.9	11.0	0.88
MNCN	2017	0.09	63.75	0	25.00	10.4	16.0	1.28
PWON	2017	0.02	69.74	1	23.84	8.7	15.8	1.66
SMRA	2017	0.61	45.73	1	23.70	2.4	6.4	1.12
UNTR	2017	0.0004	59.50	1	25.31	9.3	16.1	1.50
WSKT	2017	0.391	11.63	1	21.47	4.3	18.5	0.57

## Lampiran 2. Daftar Nama Perusahaan LQ 45

<b>No</b>	<b>Kode Saham</b>	<b>Nama Perusahaan</b>
1	ADRO	PT Adaro Energy Tbk
2	AKRA	PT AKR Corporindo Tbk
3	ASII	PT Astra International Tbk
4	BBCA	PT Bank Central Asia Tbk
5	GGRM	PT Gudang Garam Tbk
6	INDF	PT Indofood Sukses Makmur
7	MNCN	PT Media Nusantara Citra Tbk
8	PWON	PT Pakuwon Jati Tbk
9	SMRA	PT Summarecon Agung Tbk
10	UNTR	PT United Tractors Tbk
11	WSKT	PT Waskita Karya (Persero) Tbk

Lampiran 3. Data Struktur Kepemilikan Perusahaan LQ 45

Kode Saham	Kepemilikan Manajerial (%)					Rata-rata	Kepemilikan Institusional (%)					Rata-rata
	2013	2014	2015	2016	2017		2013	2014	2015	2016	2017	
ADRO	15.15	15.13	13.19	13.32	12.25	13.81	49.58	49.65	51.49	43.91	43.91	47.71
AKRA	0.51	0.73	0.68	0.71	0.57	0.64	59.18	58.78	59.17	58.58	58.47	58.84
ASII	0.04	0.04	0.04	0.04	0.04	0.04	50.11	50.11	50.11	50.11	50.11	50.11
BBCA	0.26	0.25	0.25	0.20	0.19	0.23	48.91	48.92	48.91	48.91	56.70	50.47
GGRM	0.92	0.92	0.92	0.67	0.67	0.82	75.55	75.55	75.55	75.55	75.55	75.55
INDF	0.02	0.02	0.02	0.02	0.02	0.02	50.07	50.07	50.07	50.07	50.07	50.07
MNCN	0.20	0.09	0.07	0.08	0.09	0.11	67.11	66.90	64.64	62.66	63.75	65.01
PWON	0.03	0.03	0.02	0.02	0.02	0.02	52.19	57.61	52.19	56.13	69.74	57.57
SMRA	0.28	0.28	0.28	0.14	0.61	0.32	37.64	37.64	37.64	37.64	45.73	39.26
UNTR	0.06	0.06	0.0004	0.0006	0.0004	0.02	59.50	59.50	59.50	59.50	59.50	59.50
WSKT	0.77	0.12	0.46	0.33	0.39	0.41	6.40	12.59	13.63	13.91	11.63	11.63
Tertinggi						13.81	Tertinggi					75.55
Terendah						0.02	Terendah					11.63

Lampiran 4. Data Kantor Akuntan Publik (KAP) Perusahaan LQ 45

Kode Saham	Ukuran KAP				
	2013	2014	2015	2016	2017
ADRO	1	1	1	1	1
AKRA	1	1	1	1	1
ASII	1	1	1	1	1
BBCA	1	1	1	1	1
GGRM	1	1	1	1	1
INDF	1	1	1	1	1
MNCN	1	1	1	1	0
PWON	1	1	1	1	1
SMRA	1	1	1	1	1
UNTR	1	1	1	1	1
WSKT	0	0	0	0	1

Lampiran 5. Data *Fee Audit* Perusahaan LQ 45

Kode Saham	<i>Fee Audit</i> (dalam ribuan rupiah)					Rata-rata
	2013	2014	2015	2016	2017	
ADRO	Rp 310,005,000	Rp 344,450,000	Rp 311,722,220	Rp 464,121,620	Rp 638,770,270	Rp 413,813,822
AKRA	Rp 12,468,947	Rp 10,456,743	Rp 13,991,595	Rp 18,931,735	Rp 33,728,519	Rp 17,915,508

## Lampiran 5. (Lanjutan)

Kode Saham	Fee Audit (dalam ribuan rupiah)					Rata-rata
	2013	2014	2015	2016	2017	
ASII	Rp 1,509,000,000	Rp 1,398,000,000	Rp 1,504,000,000	Rp 1,778,000,000	Rp 2,788,000,000	Rp 1,795,400,000
BBCA	Rp 215,866,000	Rp 339,241,000	Rp 401,205,000	Rp 504,201,000	Rp 544,981,000	Rp 401,098,800
GGRM	Rp 68,724,000	Rp 67,483,000	Rp 75,043,000	Rp 92,382,000	Rp 90,416,000	Rp 78,809,600
INDF	Rp 196,128,000	Rp 130,761,000	Rp 85,097,000	Rp 86,106,000	Rp 87,219,000	Rp 117,062,200
MNCN	Rp 705,000,000	Rp 60,061,000	Rp 69,227,000	Rp 63,177,000	Rp 71,936,000	Rp 193,880,200
PWON	Rp 14,276,746	Rp 13,589,084	Rp 14,091,908	Rp 15,430,589	Rp 22,630,435	Rp 16,003,752
SMRA	Rp 8,657,756	Rp 11,249,322	Rp 16,345,378	Rp 26,220,481	Rp 19,579,570	Rp 16,410,501
UNTR	Rp 54,606,000	Rp 90,656,000	Rp 59,523,000	Rp 61,227,000	Rp 97,765,000	Rp 72,755,400
WSKT	Rp 650,000	Rp 625,000	Rp 700,000	Rp 1,335,000	Rp 2,100,000	Rp 1,082,000
Tertinggi						Rp 1,795,400,000
Terendah						Rp 1,082,000

Lampiran 6. Data *Return on Assets* (ROA) Perusahaan LQ 45

Kode Saham	ROA (%)					Rata-rata (%)
	2013	2014	2015	2016	2017	
ADRO	3.4	2.9	2.5	5.2	7.9	4.4
AKRA	4.2	5.5	6.8	6.4	7.8	6.1
ASII	10.4	9.4	6.4	7.0	7.84	8.2
BBCA	2.9	3.9	3.8	4.0	3.9	3.7
GGRM	8.6	9.3	10.2	10.6	11.6	10.1
INDF	4.4	5.9	4.0	6.4	5.9	5.3
MNCN	18.8	13.8	8.8	10.4	10.4	12.4
PWON	12.2	15.5	7.5	8.6	8.7	10.5
SMRA	8.0	10.2	5.7	2.9	2.4	5.8
UNTR	8.4	8.0	4.5	7.9	9.3	7.6
WSKT	4.2	4.0	3.5	2.9	4.3	3.8
Tertinggi						12.4
Terendah						3.7

Lampiran 7. Data *Return on Equity* (ROE) Perusahaan LQ 45

Kode Saham	ROE (%)					Rata-rata (%)
	2013	2014	2015	2016	2017	
ADRO	7.2	5.6	4.5	9.0	13.1	7.9
AKRA	11.5	15.0	17.0	14.8	14.4	14.5

## Lampiran 7. (Lanjutan)

Kode Saham	ROE (%)					Rata-rata (%)
	2013	2014	2015	2016	2017	
ASII	21.0	18.4	12.3	13.1	14.8	15.9
BBCA	22.3	21.2	20.1	18.3	19.2	20.2
GGRM	14.9	16.2	17.0	16.9	18.4	16.7
INDF	8.9	12.5	8.6	12.0	11.0	10.6
MNCN	23.4	20.1	13.4	15.6	16.0	17.7
PWON	27.7	31.4	14.8	16.2	15.8	21.2
SMRA	23.5	25.2	14.1	7.4	6.4	15.3
UNTR	13.5	12.5	7.1	11.9	16.1	12.2
WSKT	15.4	17.6	10.8	10.8	18.5	14.6
Tertinggi						21.2
Terendah						7.9

## Lampiran 8. Data rasio Tobin's Q Perusahaan LQ 45

Kode Saham	Tobin's Q (%)					Rata-rata (%)
	2013	2014	2015	2016	2017	
ADRO	0.76	0.72	0.44	0.8	0.77	0.70
AKRA	1.27	1.3	1.97	1.59	1.52	1.53
ASII	1.44	1.42	1.12	1.39	1.26	1.33
BBCA	1.35	1.44	1.4	1.39	1.54	1.42
GGRM	1.93	2.37	1.98	2.25	2.7	2.25
INDF	0.94	0.77	0.57	0.98	0.88	0.83
MNCN	3.47	2.52	1.74	1.76	1.28	2.15
PWON	1.67	1.72	1.6	1.32	1.66	1.59
SMRA	1.23	1.82	1.74	1.38	1.12	1.46
UNTR	1.24	1.01	0.89	1.02	1.5	1.13
WSKT	0.32	1.13	0.86	0.69	0.57	0.71
Tertinggi						2.25
Terendah						0.70

Lampiran 9. *Output* Analisis Statistik Deskriptif

## Descriptive Statistics

	N	Minimum	Maximum	Mean	Std. Deviation
KM	55	.00	15.15	1.4951	3.95470
KI	55	6.40	75.55	51.4289	15.97698
KAP	55	.00	1.00	.9091	.29013
Fee	55	20.25	28.66	24.7429	2.06920
ROA	55	2.40	18.80	7.0898	3.45712
ROE	55	4.50	31.40	15.1709	5.48866
Q	55	.32	3.47	1.3731	.58620
Valid N (listwise)	55				

Lampiran 10. Output Uji Linieritas dengan Metode *Curve Fit* (Struktur Kepemilikan terhadap Kualitas Audit)

## Model Summary and Parameter Estimates

Dependent Variable:KA

Equation	Model Summary					Parameter Estimates	
	R Square	F	df1	df2	Sig.	Constant	b1
Linear	.264	19.002	1	53	.000	21.907	.071

The independent variable is SK.

Lampiran 11. Output Uji Linieritas dengan Metode *Curve Fit* (Struktur Kepemilikan terhadap Kinerja Perusahaan)

**Model Summary and Parameter Estimates**

Dependent Variable:KP

Equation	Model Summary					Parameter Estimates	
	R Square	F	df1	df2	Sig.	Constant	b1
Linear	.046	2.551	1	53	.116	17.679	.113

The independent variable is SK.

Lampiran 12. Output Uji Linieritas dengan Metode *Curve Fit* (Kualitas Audit terhadap Kinerja Perusahaan)

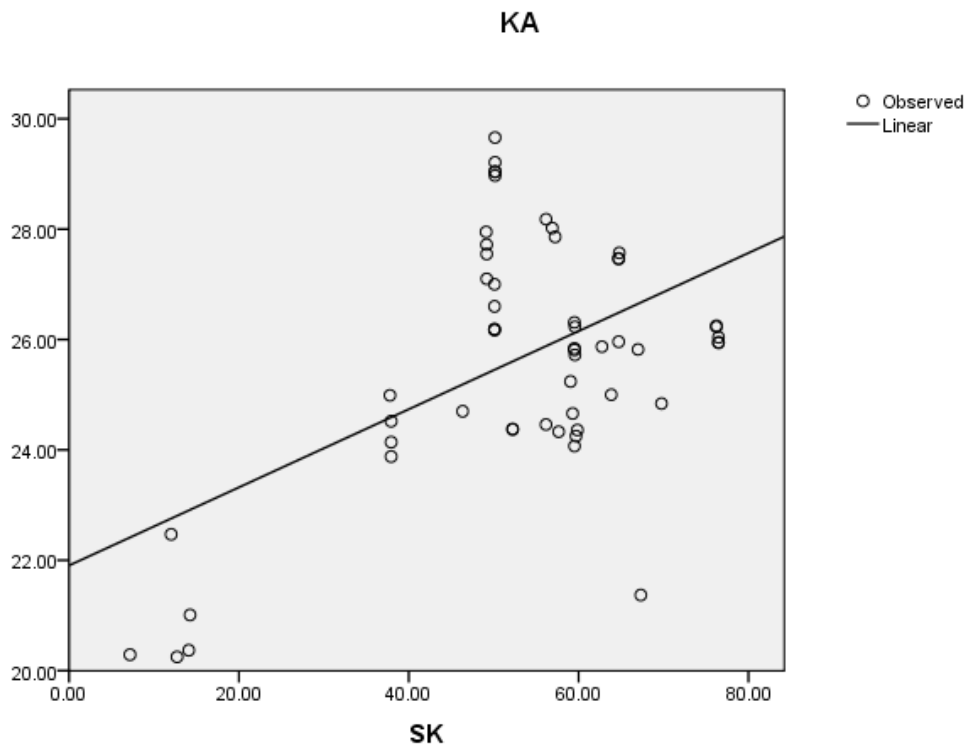
**Model Summary and Parameter Estimates**

Dependent Variable:KP

Equation	Model Summary					Parameter Estimates	
	R Square	F	df1	df2	Sig.	Constant	b1
Linear	.013	.712	1	53	.402	34.892	-.439

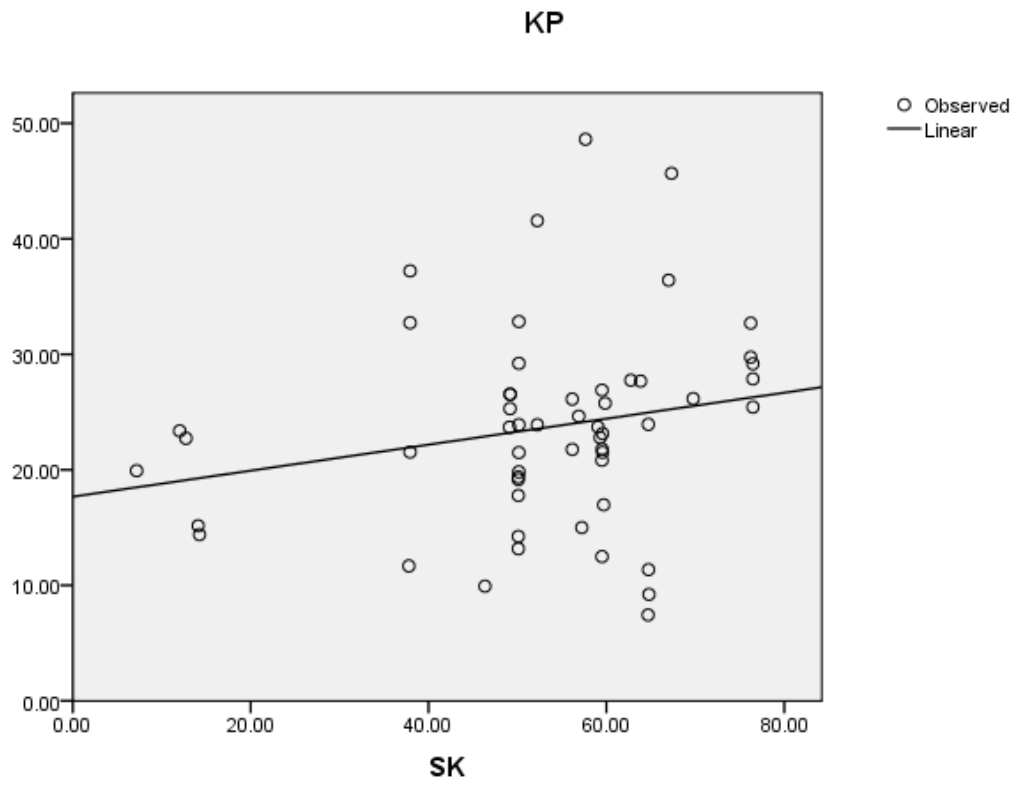
The independent variable is KA.

Lampiran 13. Kurva Linier Hubungan Struktur Kepemilikan terhadap Kualitas Audit



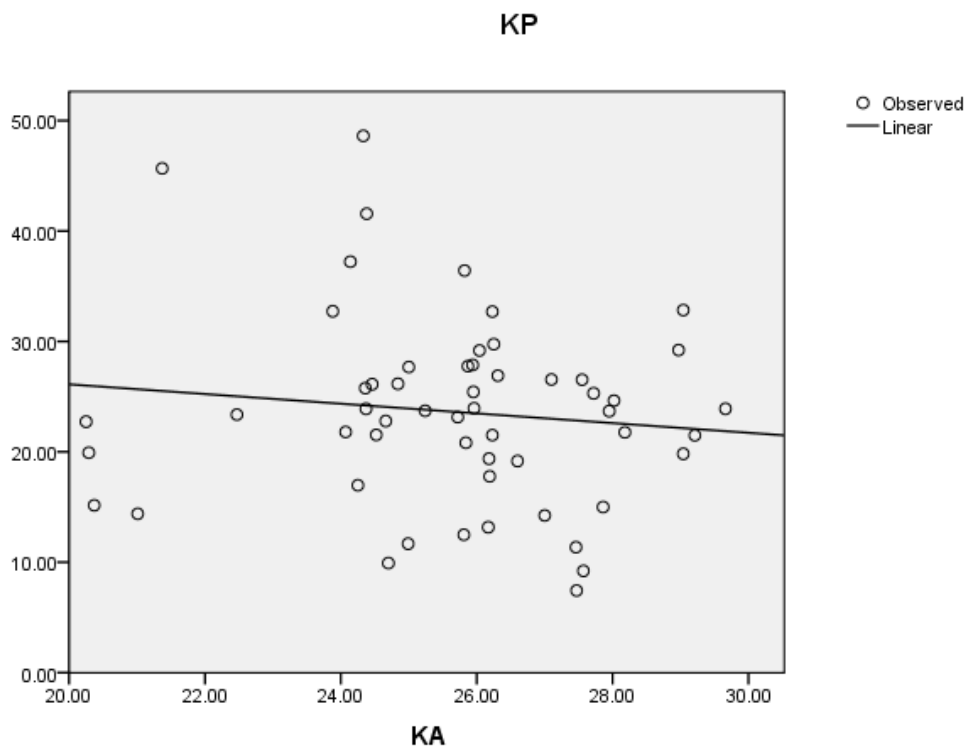


Lampiran 14. Kurva Linier Hubungan Struktur Kepemilikan terhadap Kinerja Perusahaan



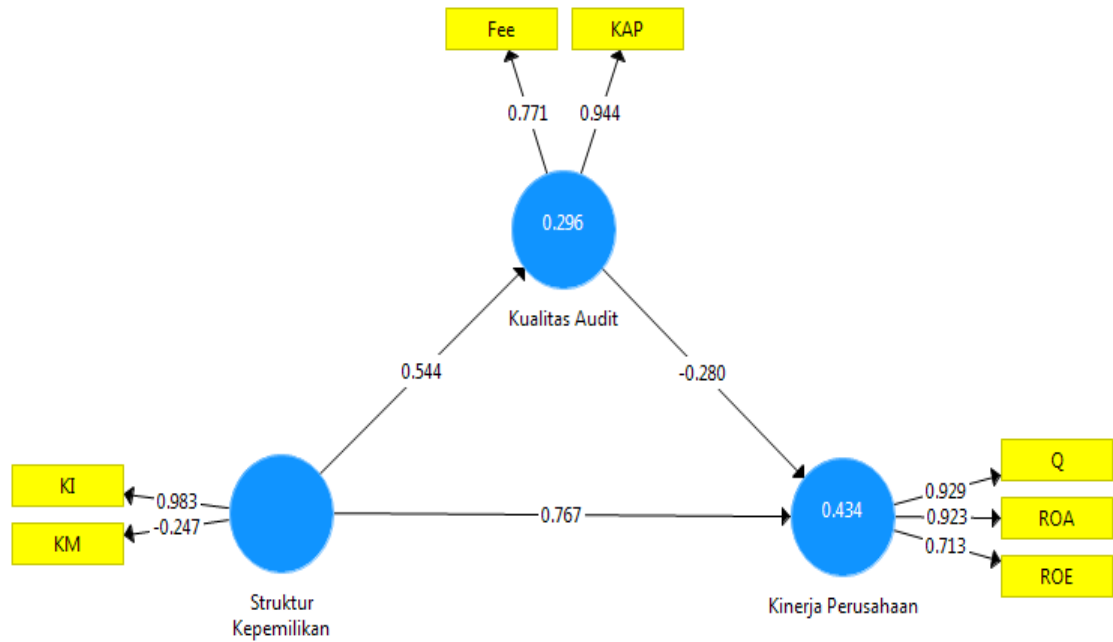
Lampiran 15. Kurva Linier Hubungan Kualitas Audit terhadap Kinerja

Perusahaan

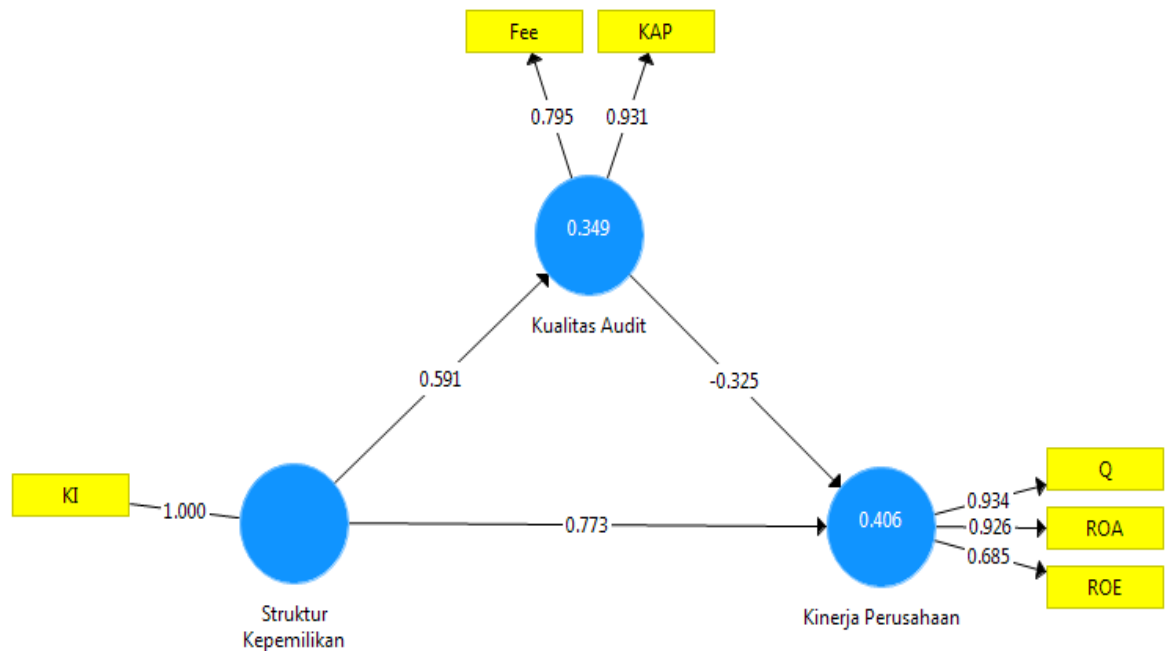
Lampiran 16. Output smartPLS 3.0 (*R Square*)

	<b>R Square</b>	<b>Adjusted R Square</b>
<b>Kinerja Perusahaan</b>	0.434	0.412
<b>Kualitas Audit</b>	0.296	0.283

Lampiran 17. Output smartPLS 3.0 (Model Pengukuran)



Lampiran 18. Output smartPLS 3.0 (Model Pengukuran Tahap Fit)



Lampiran 19. Output smartPLS 3.0 (Validitas dan Reliabilitas Konstruk)

	Cronbach's Alpha	rho_A	Reliabilitas Komposit	Rata-rata Varians Diekstrak (AVE)
Kinerja Perusahaan	0.840	0.952	0.890	0.733
Kualitas Audit	0.683	0.805	0.856	0.749
Struktur Kepemilikan	1.000	1.000	1.000	1.000

Lampiran 20. Output smartPLS 3.0 (Korelasi Variabel Laten)

	Kinerja Perusahaan	Kualitas Audit	Struktur Kepemilikan
Kinerja Perusahaan	1.000	0.131	0.581
Kualitas Audit	0.131	1.000	0.591
Struktur Kepemilikan	0.581	0.591	1.000

Lampiran 21. Output smartPLS 3.0 (Koefisien Jalur)

	Sampel Asli (O)	Sample Mean (M)	Standar Deviasi (STDEV)	T Statistik ( O/STDEV )	P Values
Kualitas Audit -> Kinerja Perusahaan	-0.325	-0.333	0.129	2.517	0.012
Struktur Kepemilikan -> Kinerja Perusahaan	0.773	0.790	0.131	5.894	0.000
Struktur Kepemilikan -> Kualitas Audit	0.591	0.577	0.188	3.145	0.002

Lampiran 22. Output smartPLS 3.0 (Hasil Analisis Bootstrapping)

